

1
2 **Chapter 9:**

3 **Stratospheric ozone in the 21st century**

4
5 D. W. Waugh¹, V. Eyring², and D. E. Kinnison,³

6
7 ¹ Department of Earth and Planetary Sciences, Johns Hopkins University, Baltimore, Maryland, USA.

8 ² Deutsches Zentrum für Luft- und Raumfahrt, Institut für Physik der Atmosphäre, Oberpfaffenhofen,
9 Germany.

10
11 ³ National Center for Atmospheric Research, Boulder, CO, USA.

12
13 *Corresponding Author:* D. W. Waugh (waugh@jhu.edu)

14
15 *April 27, 2011*

1
2
3
4
5
6
7
8
9
10
11
12
13
14
15
16
17
18
19
20

TABLE OF CONTENTS

9.1 INTRODUCTION	4
9.2 MODELS AND SIMULATIONS	5
9.2.1 Chemistry-Climate Models	5
9.2.2 Simulations	7
9.2.3 Evaluation	8
9.3 CHANGES IN MAJOR FACTORS AFFECTING STRATOSPHERIC OZONE.	10
9.3.1 Stratospheric Halogens	10
9.3.2 Temperature	11
9.3.3 Transport	12
9.3.4 Other Factors	13
9.4 PROJECTIONS OF THE BEHAVIOR OF OZONE	14
9.4.1 Tropical Ozone	14
9.4.2 Mid-latitude Ozone	15
9.4.3 Spring-time Polar Ozone	16
9.5 SUMMARY AND CONCLUDING REMARKS	18
9.6 REFERENCES	ERROR! BOOKMARK NOT DEFINED.

Abstract

This chapter discusses the future evolution of stratospheric ozone and its return to historical values from state-of-the-art three-dimensional coupled chemistry-climate models. These models have been developed by international research groups and evaluated by the atmospheric science community over the last two decades and include a detailed representation of the physical, dynamical, and chemical processes of the atmosphere, with a focus on the stratosphere. This chapter describes the models and shows examples on how these models are evaluated with observations. Factors that affect stratospheric ozone abundance, specifically ones that relate to uncertainties in the return of ozone to historical values (e.g., stratospheric halogen loading, and climate-induced temperature and transport trends) are discussed. The projected evolution of ozone is shown for different latitude regions (e.g., tropics, mid-latitudes, and polar), for different altitudes and for the total column. Hemispheric differences are also highlighted. In general models that have a better representation of transport processes measured by the models ability to represent the mean age of air and inorganic chlorine abundances are better suited to project the evolution of ozone in the 21st century. Uncertainties in current modelling approaches and recommendations for future projection simulations are also discussed.

9.1 Introduction

The stratospheric ozone layer has been depleted by anthropogenic emissions of halogenated species over the last decades of the 20th century. Observations show that tropospheric halogen loading is now decreasing, which reflects the controls of ozone-depleting substances (ODSs) by the Montreal Protocol and its Amendments and Adjustments (see chapter 2).^{1,2} The total abundance of ODSs in the troposphere peaked around 1993 and has slowly declined since then. This slow decline is expected to continue over the 21st century (21C), and ODS are expected to be back to 1980 levels around 2040 and be around 1970 levels by the end of the century (see chapter 2). Atmospheric concentrations of greenhouse gases (GHGs) have also increased and are expected to further increase in the future with consequences for the ozone layer.³ As a result of climate change, the ozone layer will not return to precisely its unperturbed state when the abundance of halogens returns to background levels. Furthermore, climate change complicates the attribution of ozone recovery to the decline of ODSs.

To project the future evolution of stratospheric ozone and attribute its change in response to the different forcings, numerical models are required that can adequately represent the chemistry and dynamics of the ozone layer, along with the energetics and natural variability of the atmosphere. The coupling of stratospheric chemistry with climate models has led to a new generation of models far more complex than those available when the Montreal Protocol was signed over twenty years ago. Such models, known as Chemistry-Climate Models (CCMs), are three-dimensional atmospheric circulation models with fully coupled chemistry, i.e. where chemical reactions drive changes in atmospheric composition which in turn change the atmospheric radiative balance and hence dynamics. CCMs are key tools for the detection, attribution and projection of the response of stratospheric ozone to ODSs and other factors, and allow questions about future stratospheric ozone and solar ultraviolet (UV)_{radiation} levels to be studied. In particular, by including an explicit representation of tropospheric climate change, they make it possible to address the coupling between climate change and ozone depletion/recovery in a comprehensive manner.

Over the past decade there have been several international projects evaluating stratospheric CCMs, and related General Circulation Models (GCMs), most of which have been organized under the auspices of the WCRP's (World Climate Research Programme) SPARC (Stratospheric Processes and their Role in Climate) project. For example, the GCM-Reality Intercomparison Project (GRIPS) and the Chemistry-Climate Model Validation (CCMVal) Activity.^{4,5} These multi-model projects have contributed directly

1 to the assessment of CCMs during the preparation of the World Meteorological Organization / United
2 Nations Environment Programme (WMO/UNEP) Scientific Assessments of Ozone Depletion.⁵⁻¹⁰

3
4 This chapter discusses projections of the evolution of stratospheric ozone during the 21st century. We
5 first describe the CCMs and simulations that have been used in the last decade to project stratospheric
6 ozone (Section 9.2). Section 9.3 briefly reviews the major factors that are affecting the ozone
7 projections which are discussed in Section 9.4. The uncertainties and open questions in the evolution of
8 ozone (O₃) in the 21C are discussed in Section 9.5, and a summary is in Section 9.6.

9 **9.2 Models and Simulations**

11 **9.2.1 Chemistry-Climate Models**

12
13 CCMs consist of coupled modules that calculate the dynamical fields (temperatures and winds),
14 radiation (heating and cooling rates), and chemistry, see **Figure 9-1**. At each time step, the simulated
15 concentrations of the radiatively active gases are used in the calculations of the net heating rates so that
16 a change in the abundance of radiatively active gases feeds back on atmospheric dynamics fields (e.g.
17 winds and temperature). Similarly changes in dynamics feed back on the chemical composition.

18
19 The dynamics (i.e. the temporal evolution of wind, temperature and pressure, or other prognostic
20 variables) in state-of-the-art CCMs is determined by solving the “primitive” equations. The basic
21 dynamical state of the atmosphere within which transport takes place depends on a number of physical
22 processes. These include the propagation of Rossby and gravity waves, wave-mean-flow interaction,
23 and the diabatic circulation. Correct reproduction of the climatological mean state of the stratosphere
24 by CCMs, including inter-hemispheric differences, inter-annual and intra-seasonal variability, is
25 important but not sufficient: the basic dynamical mechanisms must be well represented in the
26 underlying GCMs on which the CCMs are based if future changes are to be modeled credibly. A major
27 issue with GCMs of the middle atmosphere is the treatment of gravity waves.⁴ In addition, prescribed
28 sea surface temperatures (SSTs) and sea ice concentrations (SICs) hinder the feedback between
29 chemistry-climate interactions, so there is a need for a range of simulations looking at all aspects of the
30 atmosphere-ocean system.

1 Radiative calculations are used in CCMs to derive photolysis rates and heating rates. Photolysis rates in
2 the stratosphere affect the abundance of many chemical constituents that in turn control radiatively
3 active constituents, such as O₃, nitrous oxide (N₂O), methane (CH₄), and chlorofluorocarbons (CFCs).
4 These radiatively active constituents are used in radiative heating calculations and therefore affect
5 temperature and dynamics.

6

7 All CCMs used to make projections of ozone in the 21C include a comprehensive stratospheric
8 chemistry scheme that is coupled to physical processes through the radiation calculations. This includes
9 gas-phase and heterogeneous chemistry on aerosols and on polar stratospheric clouds (PSCs). One of
10 the ways in which chemistry and dynamics are coupled is the temperature dependence of many
11 chemical reaction rates. The importance of local control of ozone by chemistry relative to transport
12 varies substantially between various times and places. In the upper stratosphere transport plays a role
13 by controlling the concentrations of long-lived tracers such as inorganic chlorine, but photochemical
14 timescales are so short that transport has a minimal direct impact on ozone. However, in the lower
15 stratosphere, the photochemical timescales are longer (typically of the order of months) and
16 interactions with dynamics are complex and more challenging to model accurately. In addition,
17 aerosols and PSCs play an important role in chemistry of the lower stratosphere, since reactions can
18 take place within or on the particles. In this region, heterogeneous reactions convert inorganic chlorine
19 and bromine reservoir species to more active ozone depleting species (Chapter 4). Consequently, even
20 though the photochemical lifetime of ozone is typically many months in the lower stratosphere, rapid
21 chemical loss of ozone occurs when temperatures are cold, aerosols or PSCs exist, and sunlight is
22 available (Chapter 5).

23

24 Transport in the stratosphere involves both meridional overturning (the so-called “Brewer-Dobson”
25 circulation) and mixing. The most important aspects are the vertical (diabatic) mean motion and the
26 horizontal mixing. Horizontal mixing is highly inhomogeneous, with transport barriers in the subtropics
27 and at the edge of the wintertime polar vortex; mixing is most intense in the wintertime “surf zone”, i.e.
28 the region surrounding the polar vortex, and is comparatively weak in the summertime extratropics.
29 Accurate representation of this structure in CCMs is important for the ozone distribution itself, as well
30 as for the distribution of chemical families and species that affect ozone chemistry, e.g. Cl_y, total
31 inorganic nitrogen (NO_y), total inorganic bromine (Br_y) water vapor (H₂O), and CH₄.

32

9.2.2 Simulations

CCMs have been used to perform several different types of simulations. Transient simulations consider observed or projected changes in concentrations of radiatively active gases and other boundary conditions (e.g., emissions), whereas time-slice simulations are applied to study the internal variability of a CCM under fixed conditions, e.g., GHG concentrations and SSTs, to estimate the significance of specific changes. Transient simulations are preferred for studying past and projecting future ozone changes because in these simulations, ozone responds interactively to the gradual secular trends in GHGs, ODSs, and other boundary conditions. The CCM simulations are commonly separated into “past” (or “historical”) transient simulations that are forced by observations of ODSs, GHGs, and SSTs, and are carried out to see how well the models can reproduce the past behavior of stratospheric ozone, and “future” transient simulations that are forced by trace gas projections and modeled SSTs and are carried out to make projections for the future evolution of stratospheric ozone. In addition, sensitivity or idealized simulations are performed where one or more of the forcing fields are held fixed or vary in an unrealistic manner to isolate the role of particular factors in driving changes in stratospheric O₃.

In recent years the community has defined reference simulations, with a set of anthropogenic and natural forcings, to encourage consistency and comparison between simulations by different modeling groups.^{11,12,13}

The **past reference simulation**, is defined as a transient run from 1960 to the present and is designed to reproduce the well-observed period of the last 30 years during which ozone depletion is well recorded.¹⁴ This simulation examines the role of natural variability and other atmospheric changes important for ozone balance and trends. All forcings in this simulation are taken from observations. This transient simulation includes all anthropogenic and natural forcings based on changes in trace gases, solar variability, volcanic eruptions, quasi-biennial oscillation (QBO), and SSTs/SICs.¹³

The corresponding **future reference simulation** is a transient simulation from the past into the future (ideally 1960 to 2100) whose objective is to produce best estimates of the future ozone-climate change up to 2100 under specific assumptions about GHG increases and decreases in halogen emissions in this period. GHG concentrations (N₂O, CH₄, and CO₂) in this reference simulation are prescribed following the Intergovernmental Panel on Climate Change Special Report on Emission Scenarios (IPCC SRES)

1 ‘A1B’ GHG scenario and surface mixing ratios of ODSs are based on the adjusted halogen scenario A1
2 from the 2006 WMO/UNEP Assessment, which includes the earlier phase out of
3 hydrochlorofluorocarbons (HCFCs) that was agreed to by the Parties to the Montreal Protocol in 2007,
4 see **Figure 9-2**.^{2,3} The future reference simulations typically include only anthropogenic forcings, and
5 external natural forcings such as solar variability and volcanic eruptions are not considered, as they
6 cannot be known in advance.

7 The CCMVal reference simulations have been performed by most CCM groups in support of the 2006
8 and 2010 WMO/UNEP Assessments.^{2,14} The first round of CCMVal (CCMVal-1) included thirteen
9 CCMs, whereas 18 CCMs participated in the most recent second round of CCMVal (CCMVal-2), see
10 **Table 9.1**.¹¹ In addition, several different types of **sensitivity simulations** have been performed by a
11 small subgroup of CCMs. For example, simulations with fixed halogens have been performed to study
12 the effect of halogens on stratospheric ozone (and climate) in a changing climate’ and ‘no greenhouse-
13 gas induced climate change’ simulations have been performed to address the coupling of ozone
14 depletion/recovery and climate change.¹⁵⁻¹⁷ The SRES A1B GHG scenario is only one of several
15 scenarios for the possible evolution of GHGs, and future simulations have also been performed using a
16 different GHG scenarios to assess the dependence of the future ozone evolution on the GHG
17 scenario.^{10,18}

18

19 **9.2.3 Evaluation**

20

21 Confidence in, and guidance in interpreting, CCM projections of future changes in atmospheric
22 composition can be gained by first ensuring that the CCMs are able to reproduce past observations.
23 Limitations and deficiencies in the models can be revealed through intermodel comparisons and
24 through comparisons with observations. As well as evaluating the simulations of the state of the
25 atmosphere it is also important to evaluate the representation in the models of key processes that
26 control the distribution of stratospheric ozone.⁵ Also, with the increasing number of CCMs and the
27 large spread in ozone projections there is a need for multi-model comparison in addition to single
28 model studies.

29

30 Over the last decade there have been several multi-model comparisons that have evaluated different
31 aspects of the CCMs. *Austin et al.* evaluated a mixture of time-slice and transient simulations from
32 eight CCMs.⁶ They focused on diagnostics to evaluate the representation of dynamics in polar regions

1 and found that many of the participating CCMs indicated a significant cold bias in high latitudes, the
2 so-called “cold pole problem”, particularly in the southern hemisphere during winter and spring. They
3 concluded that the main uncertainties of CCMs at that time stemmed from the performance of the
4 underlying GCM. Cold biases have been found to exist in the stratosphere in many CCMs, consistent
5 with that previously found for models without chemistry.⁴

6
7 The thirteen CCMs that participated in CCMVal-1 were evaluated and considered in the 2006
8 WMO/UNEP Assessment.^{8,19} In contrast to previous studies, the CCM simulations were all transient
9 simulations and had almost identical forcings (e.g., SSTs, GHGs, and ODSs). This eliminated many of
10 the uncertainties in the conclusions of the earlier assessments that resulted from the differences in
11 experimental setup of individual models. Also, and perhaps most importantly, this study was the first
12 multi-CCM assessment to evaluate the representation of transport and distributions of important trace
13 gases. It was shown that there were substantial quantitative differences in the simulated stratospheric
14 Cl_y, with the October mean Antarctic Cl_y peak value varying from less than 2 ppb to over 3.5 ppb in the
15 participating CCMs were found. These large differences in Cl_y among the CCMs have been found to be
16 key to diagnosing the intermodel differences in simulated ozone recovery, in particular in the Antarctic,
17 see further discussion below.⁹ Several other studies evaluated and analyzed different aspects in the
18 CCMVal-1 simulations. For example, *Gettelman et al.* showed that the CCMs were able to reproduce
19 the basic structure of the Tropical Tropopause Layer (TTL) but differences were found in cold point
20 tropopause temperatures trends.²⁰ *Austin et al.* found that the mean model response is about 2.5% in
21 ozone and 0.8 K in temperature during a typical solar cycle, which is at the lower end of the observed
22 ranges of peak responses.²¹

23
24 A much more extensive evaluation of CCMs was performed as part of the 2010 SPARC CCMVal
25 Report.¹¹ This report analyzed simulations from the 18 CCMs that participated in CCMVal-2. All
26 thirteen CCMs in CCMVal-1 participated again, but partly with updated and improved or new model
27 versions; in addition five new models submitted output to the CCMVal archive.⁸ The SPARC CCMVal
28 report included evaluation of a much larger set of processes than in previous evaluations, , with an
29 evaluation of dynamical, radiative, chemical, and transport processes as well as upper
30 troposphere/lower stratosphere and stratosphere-troposphere coupling.⁸ The report also included the
31 application of observationally based performance metrics to quantify the ability of models to reproduce
32 key processes. Overall the performance of CCMVal-2 models is similar to those in CCMVal-1. There
33 are some diagnostics for which there is improvement (e.g., Cl_y) but for other diagnostics the general

1 model performance is worse and the spread of models is larger (e.g., 100 hPa temperature and water
2 vapor).

3

4 **9.3 Changes in major factors affecting stratospheric ozone.**

5

6 As discussed in the Introduction, the increase in stratospheric chlorine and bromine over the last few
7 decades was the dominant cause of decreases in O₃ over this period. However, as discussed in Chapter
8 8, climate change is likely to have an increasing role in O₃ changes over the next century. Therefore,
9 before discussing the projected ozone evolution, we examine the changes in the factors that control the
10 distribution of O₃ as projected in the CCM simulations.

11

12 **9.3.1 Stratospheric Halogens**

13

14 The abundance of surface total chlorine (Cl_{tot}) and total bromine (Br_{tot}) peaked around 1993 and has
15 slowly declined since then (see **Figure 9-3**).¹⁴ This slow decline is expected to continue over the 21C,
16 and ODSs are expected to be back to 1980 levels in the 2030s and be below 1970 levels by the end of
17 century. The stratospheric chlorine and bromine loading is expected to evolve in a similar manner,
18 although with a transport-related time delay. A commonly used variable for the effect of halogens on
19 stratospheric ozone is the Effective Equivalent Stratospheric Chlorine (EESC).^{22,23} The EESC is an
20 empirical estimate of stratospheric reactive chlorine and bromine, based on measurements and
21 projections of surface ODS, observational estimates of the transit times between the troposphere and
22 stratosphere and the fractional release rates of different ODS. Fractional release is the fraction of
23 inorganic halogen released from halocarbons at a given location and time. Calculations of EESC
24 appropriate for mid-latitude lower stratosphere (mean age of air ~ 3 years) indicate a return of EESC to
25 1980 values around 2040, while calculations for polar regions (mean age of air ~ 5.5 years) show a
26 later return dates around 2065. There is a ~25 year difference in return dates for polar and mid-latitude
27 EESC, even though there is only a ~2.5 year difference in mean age, because of the rapid growth of
28 EESC around 1980 and slow decay around 2050.

29

30 The CCMs simulate Cl_y and Br_y within the stratosphere, and these concentrations can be used, rather
31 than EESC, to examine variations in halogen that effect ozone (Chapter 2). As discussed in Section 9.2,
32 the CCM simulations use a common scenario for the surface concentrations of ODSs when making

1 projections. However, although the general evolution of Cl_y and Br_y is similar between CCMs, there are
2 significant variations in the peak values of Cl_y and Br_y and the timing of the return to historical levels.
3 For example, in the polar lower stratosphere the simulated peak value of Cl_y in the individual CCMVal-
4 2 models varies between 2.2 and 3.3 ppb, and the year when Cl_y returns to its 1980 value varies
5 between 2040 and 2080 (see Figure 9.13 in the SPARC CCMVal report¹¹). These two aspects are
6 generally related, with CCMs with lower peak Cl_y values projecting an earlier return of Cl_y to pre-1980
7 values. The resulting evolution of Cl_y in the CCMVal-2 multi-model mean along with its uncertainty is
8 shown in **Figure 9-4**.

9
10 As discussed in Section 9.2.3, the observed peak Cl_y in polar regions is around 3.3 ppb and most CCMs
11 underestimate this peak value. This bias and the fact that models with lower peak return to 1980 values
12 earlier needs to be considered when interpreting the CCM projections of ozone.

14 **9.3.2 Temperature**

15
16 As discussed in Chapter 8, changes in stratospheric temperatures can impact ozone loss by changing
17 the rate of chemical reactions and the formation of PSCs. The stratosphere has cooled over the last four
18 decades, and cooling is expected to continue through the 21C.^{9,11,24} The cooling over the past few
19 decades can be attributed to contributions from both increasing CO₂ and decreasing O₃ (the latter
20 caused by increasing ODSs).^{25,26} The impact of increasing CO₂ is expected to be dominant through the
21 21C, and CCMs show cooling in extra-polar regions throughout the 21C. The cooling rate increases
22 with altitude, and the projected cooling in the upper stratosphere in the 21C is around 1 K/decade
23 (**Figure 9-5**). This cooling in the middle and upper stratosphere will decrease the rate of the gas-phase
24 chemical reactions that destroy O₃ (Chapter 1, 6), and cause O₃ to return to historical values earlier than
25 expected just from changes in stratospheric halogens.

26
27 In the polar lower stratosphere temperature trends could alter O₃ by a different mechanism; namely a
28 cooling could lead to increase in the temporal and spatial extent of PSCs. This would increase the
29 occurrence of heterogeneous chemical reactions that lead to ozone depletion. There are large seasonal
30 variations in polar temperature trends, but the winter / early spring trends are most relevant for
31 understanding polar ozone depletion. CCM projections are not uniform on whether there is a cooling or
32 warming in either polar region, but nearly all indicate that any trends will likely be small.^{9,24}

1 Understanding and quantifying trends in polar lower stratospheric temperatures during late winter /
2 spring is complicated by the large year-to-year variability (especially in the northern hemisphere)
3 which tends to interfere with any long-term trend detection. The lack of large winter trends could be
4 due to increased downwelling and diabatic warming compensating the radiative cooling due to
5 increasing GHGs.

7 **9.3.3 Transport**

8
9 Another factor that could influence the 21C evolution of stratospheric O₃ is a change in stratospheric
10 circulation. Changes in stratospheric dynamics alters the stratospheric circulation, which then impacts
11 the O₃ distribution by altering the direct transport of O₃ among regions, as well as by altering the
12 distribution of Cl_y and Br_y, and other species involved in O₃ destruction. A robust result of modeling
13 studies is that an increase in GHGs leads to an increase in the tropical vertical velocities
14 (upwelling).^{24,27,28} This is illustrated in **Figure 9.6**, which shows the multi-model mean and variance
15 for projections of the tropical upwelling over the 21C. When GHGs and SSTs are increased there is a
16 significant increase in the upwelling (“REF”), whereas in a simulation with no climate change with
17 GHG and SSTs fixed at 1960 levels, there is no change in the upwelling (“fGHG”).¹⁶ The increase in
18 tropical upwelling leads to reduced transport time scales and a decrease in the mean age of air in the
19 stratosphere.²⁴ The CCM simulations also indicate that there has been an increase in the tropical
20 upwelling and decrease in mean age of air over the past few decades.^{17,29-31} However, this decrease has
21 not been confirmed by observations, and a study by *Engel et al.* provided evidence that there has been a
22 very small increase in the mean age of air over the last three decades.³² There are however large
23 uncertainties in the estimates of mean age from observations, and the cause of the discrepancy between
24 the model and observations is unknown.^{33,34}

25
26 The impact on O₃ of this acceleration of the stratospheric circulation will vary between regions. For
27 example, an increase in upwelling will decrease tropical ozone below the peak in O₃ concentrations
28 (below ~10 hPa) but will increase tropical ozone above this peak. An increase in the meridional
29 circulation will also likely increase O₃ in middle latitudes due to increased transport from tropical
30 source region. We also expect the impact of changes in transport to be larger in the lower stratosphere,
31 where photochemical timescales are longer, than in the upper stratosphere where ozone is under
32 photochemical control.

1

2 **9.3.4 Other Factors**

3 The long-term evolution of O₃ could also be altered by changes in nitrogen and hydrogen species that
4 are involved in ozone destruction (see Chapter 8).

5

6 Increases in tropospheric N₂O are expected to occur in the 21C, leading to an increase in stratospheric
7 NO_y. This would in turn be expected to lead to a decrease in ozone in the middle and upper stratosphere
8 due to increased O₃ destruction by nitrogen oxides (NO_x). However, the percentage decrease in ozone is
9 expected to be much smaller than the percentage N₂O increase. The increase in NO_y is smaller than
10 N₂O due to temperature decreases in the upper stratosphere.³⁵ For example, the surface concentration
11 of N₂O under scenario A1B increases by around 16% between 1980 and 2050, but the CCMs project
12 that over the same period the stratospheric NO_y generally increases by around 10% or less.

13

14 Although the increase in NO_y is small over the 21C and not a dominant factor when GHGs follow the
15 SRES A1B scenario, this is not the case for all IPCC scenarios.³ For example, for the SRES A2
16 scenario there is a larger increase in N₂O, and changes related to NO_y make a significant contribution to
17 changes in upper stratospheric O₃ (e.g., in the GEOS CCM the decrease in O₃ at 3 hPa related to NO_y is
18 ~1/3 the increase related to Cl_y decreases).³⁶

19

20 The evolution of ozone in the 21C could also be affected by changes in stratospheric water vapor. An
21 increase in water vapor would increase hydrogen oxide (HO_x), and lead to increased ozone loss in the
22 extra-polar lower and upper stratosphere, where HO_x dominates ozone loss. In addition to changing
23 HO_x, an increase in water vapor would affect PSC formation and heterogeneous reactions in the
24 CCMs, which could lead to increased spring-time polar ozone loss (see Chapter 8).

25

26 There are two mechanisms that could cause long-term increases in stratospheric H₂O: (i) increases in
27 CH₄, which will lead to an increase in H₂O, due to increased production from CH₄ oxidation, and (ii) a
28 warming of the tropical cold-point temperature (which controls the stratospheric entry value of H₂O).
29 Surface concentrations of CH₄ are projected to increase over 21C, although there are large variations
30 between GHG scenarios. Most CCMs indicate a warming of the tropical tropopause in the future,
31 which would cause an additional increase in stratospheric H₂O, by increasing the concentrations
32 entering the stratosphere.⁹ However, the increase in stratospheric H₂O due to the warming of tropical

1 tropopause is generally smaller than contribution from a CH₄.³⁷ Overall, the stratospheric global-mean
2 water vapor trends simulated by the CCMs are small (for the A1B scenario), and are not likely a major
3 cause of changes in stratospheric O₃. This might however change, if methane increases due to the
4 melting of permafrost is considered.

5

6 **9.4 Projections of the behavior of ozone**

7 The impact of the different climate factors discussed above on ozone varies between regions, both with
8 latitude and altitude. As a consequence, the ozone evolution varies between regions. This is illustrated
9 in **Figure 9.7**, which shows the multi-model mean change in O₃ between 2000 and 2100 from the
10 CCMVal-2 models.¹⁸

11 **9.4.1 Tropical Ozone**

12

13 As shown in **Figure 9.7a**, the change in tropical ozone between 2000 and 2100 is very different above
14 and below ~15 hPa. In the upper stratosphere ozone is projected to increase, whereas a decrease is
15 projected in lower stratospheric O₃.^{9,16} This contrast is clearly seen in the solid black curves in **Figure**
16 **9.8**, which shows the multi-model mean evolution of (a) upper and (b) lower stratospheric O₃ from the
17 CCMVal-2 reference simulations.¹⁶

18

19 The different evolution of ozone in the tropical upper and lower stratosphere is due to the different role
20 of climate change (and different role of the mechanisms discussed in Section 9.3) in the two regions.
21 The increase in tropical upper stratosphere O₃ is due mainly to decreases in halogen levels, which
22 reduces the O₃ loss due to catalytic chlorine and bromine reactions, and cooling due to increased
23 GHGs, which slows the chemical reactions that destroy O₃, (see Section 9.3 and Chapter 1). These two
24 mechanisms make roughly equal contribution to the O₃ increase over the 21C (for the A1B GHG
25 scenario).^{9,15,36,38} This can be seen in Figure 9.8a by comparing the dashed (orange) and dotted (blue)
26 curves (shaded regions), which show the projected changes in O₃ due to climate change and ODSs,
27 respectively. The change due to ODSs dominates over the latter part of the 20th century, but there is a
28 similar increase in both terms over the 21C.

29

30 In the tropical lower stratosphere the major mechanism causing long-term decreases in O₃ is the
31 increase in tropical upwelling. As discussed in Section 9.3.3, a robust result in CCMs is an increase in
32 tropical upwelling through the 21C. A future increase in upwelling in the tropics would result in a

1 faster transit of air through the tropical lower stratosphere from an enhanced Brewer-Dobson
2 circulation which would lead to less time for production of ozone and hence lower ozone levels in this
3 region.¹⁴

4
5 The fact that climate change is expected to increase O₃ in the tropical upper stratosphere, but to
6 decrease O₃ in the tropical lower stratosphere means that if, and when, O₃ returns to historical values
7 (e.g., to values of O₃ in 1960 or 1980) varies between these altitudes. In the upper stratosphere, O₃ is
8 projected to return to historical values several decades before upper stratospheric Cl_y and Br_y (and
9 equivalent stratospheric chlorine, ESC; see Chapter 2) return to their historical values. For example, O₃
10 returns to 1960 values over 70 years before Cl_y and Br_y return to their 1960 values (see Figure 9.8a). In
11 the tropical lower stratosphere O₃ may never return to historical values, even when anthropogenic
12 ODSs have been removed from the atmosphere. For example, the multi-model mean O₃ decreases
13 steadily from 1960 to 2100, even though Cl_y and Br_y return to 1960 values by the middle of the 21C,
14 see Figure 9.8b.

15
16 The evolution of tropical column ozone depends on the balance between the increase in upper
17 stratospheric concentrations and the decrease in lower stratospheric values, and as a result the projected
18 changes are small, see **Figure 9.9**. There is no consensus between CCMs on whether tropical column
19 ozone will return to pre-1980 values, with some models showing O₃ increasing slightly above 1980
20 values by the second half of the 21C with O₃ remaining below 1980 values through the 21C. There is
21 however a consensus that tropical column ozone will not return to 1960 values, i.e. even when
22 stratospheric halogens return to historical (pre-1960) values tropical column ozone will remain below
23 its historical values.

25 **9.4.2 Mid-latitude Ozone**

26
27 The projected evolution of mid-latitude middle and upper stratosphere O₃ is very similar to that in the
28 tropics (Figure 9.7b), with cooling in the upper stratosphere causing O₃ to return to historical values
29 before Cl_y and Br_y. Furthermore, the magnitude of changes in O₃ and dates for returning to historical
30 values are very similar to the tropics, as is the spread between CCMs. In the lower stratosphere the
31 evolution of mid-latitude O₃ differs somewhat from that in the tropics. In the subtropics O₃ decreases
32 but at higher latitudes (and averaged over middle latitudes) there is an increase in lower stratospheric

1 O₃. As in the tropics, changes in transport play an important role in these O₃ changes. However, in mid-
2 latitudes the increase in the meridional circulation leads to an increase rather than a decrease in lower
3 stratospheric O₃.^{38,39}

4
5 Because ozone averaged over mid-latitudes increases in the upper and lower stratosphere over the 21C,
6 a similar evolution is projected for mid-latitude total column ozone, see Figure 9.9. The evolution of
7 mid-latitude column ozone is similar among the CCMs, with a broad minimum around 2000 which is
8 followed by a slow increase back to and above 1980 values. In all CCMs the return of O₃ to 1980
9 values occurs before that of Cl_y and Br_y. However, as can be seen by the multi-model mean standard
10 deviation that is shown in Figure 9.9, there is a spread in the magnitude of the changes and time of
11 return to 1980 values. This spread is closely linked to the spread in simulated Cl_y.^{7,9}

12
13 In most CCMs there are interhemispheric differences in the evolution of column ozone. The qualitative
14 evolution is the same but there is a difference in magnitude of anomalies and in the date of return to
15 historical values. The anomalies are larger in the SH (because of spreading of ozone hole air into
16 midlatitudes) and the return of mid-latitude column O₃ to 1980 values occurs later in the SH. The
17 difference in date of return to 1980 values appears to be due to interhemispheric difference in changes
18 in transport. The increase in stratospheric circulation driven by climate change transports more O₃ into
19 NH midlatitude lower stratosphere than SH.³⁸

21 **9.4.3 Spring-time Polar Ozone**

22
23 The largest ozone depletion is observed in the polar lower stratosphere during spring, especially in the
24 Antarctic (see Chapter 5). As a result a major focus of model simulations is the projected evolution of
25 polar lower stratospheric ozone during spring.

26 *Antarctic.*

27
28 All models project a qualitatively similar evolution for Antarctic (60°-90°S) ozone in spring, with a
29 broad minimum around 2000 followed by a very slow increase and a return to 1980 values sometime
30 around the middle of the century, see **Figure 9.10b**. There are however, as in the extrapolar regions,
31 significant quantitative differences among the models, including a wide spread in the minimum values
32 around 2000 and dates when ozone returns to 1980 (or 1960) values.^{7,9}

1
2
3
4
5
6
7
8
9
10
11
12
13
14
15
16
17
18
19
20
21
22
23
24
25
26
27
28
29
30
31
32

Several different ozone indices have been used to quantify variations in Antarctic ozone, including the polar cap average (Figure 9.10), ozone mass, daily minimum ozone, and area of the ozone hole (area of ozone less than 220 DU).⁴⁰ There are some differences in the evolution of these different diagnostics, in particular over the 2000 to 2030 period where the rate of change varies. However, all diagnostics show the same broad evolution with return to 1980 values around the middle of century, and a wide spread among the models in quantitative details.

The evolution of Antarctic spring ozone is dominated by the changes in Cl_y and Br_y, and changes in climate (temperature and transport) are not, in general, a major factor. This can be seen by the very close correspondence of the evolution of ozone and Cl_y (or ESC),^{7,9,16}. The spread in Antarctic ozone projections are, as a result, primarily due to differences in simulated Cl_y (and Br_y) among the models. Models that simulate a smaller peak Cl_y have an earlier return of Cl_y to 1980 values, and generally also have smaller ozone depletion and earlier return of ozone to 1980 values. This relationship suggests that the low bias in Cl_y in most models results in an early bias in the projected return of ozone to 1980 values, i.e., the return to 1980 values will likely occur later than indicated by the multi-model mean shown in Figure 9.10b.

Projections of the recovery of the Antarctic ozone hole have also been made using parametric models based on estimates of EESC and analyzed polar temperatures.⁴¹ These calculations indicate that the ozone hole area will remain constant until around 2015, and then decrease to zero around 2070. This recovery date is later than that simulated by most models (see Figure 9b of *Eyring et al.* [2007]), but this difference is consistent with a bias in the models dynamics and transport.⁹

Arctic.

Dynamical effects play a much larger role in the evolution of springtime Arctic ozone than in the Antarctic, and as a consequence there is large interannual variability. This interannual variability is much larger than the long-term changes, and time series need to be filtered (smoothed) to see long-term trends. However, long-term evolution of the filtered Arctic ozone is qualitatively the same as in other regions: There is a broad minimum around 2000 with slow increase over the first half of the 21C, see Figure 9-10a.

1 Although there is qualitative agreement among the models there are large quantitative variations in the
2 simulated changes in Arctic ozone, with some models showing only a small or even no change in ozone
3 while others show a large response to changes in halogens. There are substantial variations among the
4 models in the date when ozone returns 1980 values (2020 to 2060), e.g., see Figure 16 of *Austin et al.*
5 [2010].⁷

6
7 An early study by *Shindell et al.* projected a substantial increase in Arctic ozone depletion, and the
8 development of an Arctic ozone hole, because of climate change.⁴² However, subsequent studies have
9 not reproduced this result. Even though there is a large spread among the CCMs, in both CCMVal-1
10 and CCMVal-2, none of the CCMs predict large Arctic ozone decreases in the future.

11
12 Models project that Arctic ozone will return to 1980 values before Antarctic ozone, with the difference
13 varying from only a few years in some models to over 25 years in others. The evolution of Cl_y and Br_y
14 is similar in both polar regions, but because changes in temperature and transport play a significant role
15 in the Arctic, the evolution of Arctic O₃ does not follow that of Cl_y and Br_y as closely as Antarctic
16 ozone. In particular, acceleration of the Brewer-Dobson circulation and increases in polar temperatures
17 cause an earlier return than that expected just because of changes in halogens.⁴³ These dynamical
18 changes vary substantially among models, and as a consequence so does the differences in return dates
19 of Arctic and Antarctic ozone.

21 **9.5 Summary and Concluding Remarks**

22
23 The evolution of stratospheric ozone in the 21st century will depend not only on changes (expected
24 decreases) in the abundance of stratospheric halogens but also on changes due to increases in well-
25 mixed greenhouse gases. The latter will cool the stratosphere, increase the abundance of nitrogen and
26 hydrogen species involved in ozone destruction, and may also alter transport within the stratosphere.
27 The impact of the greenhouse-gas-induced change on ozone varies between regions, and as a
28 consequence the ozone evolution will vary between regions.

29
30 In the upper stratosphere the projected ozone evolution is very similar in the tropics and middle
31 latitudes, with ozone increasing back to 1960 values in the first 2-3 decades of the 21st century. This
32 rapid increase in ozone is due to both decreases in ODSs and cooling due to increased GHGs. The

1 evolution in the mid-latitude lower stratosphere is similar to that in the upper stratosphere, although
2 climate-change induced increases in the circulation play more of a role than cooling. In the tropical
3 lower stratosphere the evolution is, however, very different: here ozone decreases throughout the 21st
4 century due to climate-change-induced increases in the tropical upwelling. In the Antarctic, the models
5 consistently show a broad minimum near year 2000 followed by a slower return to 1980 values than in
6 middle latitudes (with the return delayed until the middle of the century). In the Arctic, the interannual
7 variability in ozone is larger than long-term trends and the models are less consistent in their
8 representation of ozone recovery. However, in most models Arctic ozone returns to 1980 values before
9 Antarctic ozone.

10
11 Although there is generally qualitative agreement among models in the evolution of ozone there are
12 some substantial quantitative differences. In particular there is a wide spread in projected ozone values
13 at specified periods and in the dates when ozone returns to historical values. In many cases the
14 differences among model projections can be related to differences in the simulated Cl_y , and improving
15 the transport of Cl_y , which will reduce the uncertainty in ozone projections, is a remaining major
16 challenge.

17
18 It is also important to note that the ozone projections depend on scenarios for surface concentrations of
19 ODSs and GHGs, and the majority of the projections have considered very similar ODS scenarios and
20 the same GHG scenario. However, a recent examination of CCM projections for six different GHG
21 scenarios found that lower GHG emissions result in (i) smaller reductions in ozone in the tropical lower
22 stratosphere (due to smaller increases in tropical upwelling) and (ii) smaller increases in upper
23 stratospheric ozone globally (due to less severe stratospheric cooling).¹⁰ Largest differences among the
24 six GHG scenarios were found over northern midlatitudes (~20 DU by 2100) and in the Arctic (~40
25 DU by 2100) with divergence mainly in the second half of the 21st century. The results suggest that
26 effects of GHG emissions on future stratospheric ozone should be considered in climate change
27 mitigation policy and ozone projections should be assessed under more than a single GHG scenario.

28
29 Future assessments should also consider the uncertainty in how the models force the organic halogen
30 lower boundary condition. Currently, projections of future organic halogen loadings are based on
31 projected emission rates and an estimate of the global atmospheric lifetime of each organic halogen.
32 These factors are then used to create time-dependent volume mixing ratio lower boundary conditions,
33 that are then used to force the CCMs. However, the destruction of each halogen in the CCMs is

1 dependent on the tropical upwelling, meridional mixing, and chemical loss rates (e.g., photolysis rates),
2 and the CCM-derived halogen lifetimes can be very different from the lifetimes assumed for the given
3 projection scenario. By forcing all CCMs to use fixed mixing ratio lower boundary conditions, the flux
4 into the tropical lower stratosphere is fixed in all the models. This will minimize the spread in model
5 derived ozone return dates.⁴⁴ If models were forced with flux lower boundary conditions, the simulated
6 ODS would be consistent with the simulated loss of ODSs and any changes in the model circulation
7 would also feedback on these loss rates. Models with a more realistic circulation (e.g., representation of
8 mean age) would also more accurately represent the fractional release of inorganic halogens from their
9 parent organic. This approach would give a more accurate representation of ozone depletion and
10 recovery.

11

12 Another consideration for future simulations is inclusion of interactive ocean and sea ice modules in
13 the CCMs. In all but one of the CCM simulations discussed above the sea surface temperatures and sea
14 ice concentrations were prescribed, and the important coupling between the atmosphere and oceans /
15 cyrosphere are not represented. The one exception is the Canadian Middle Atmosphere Model
16 (CMAM), in which the atmospheric model is coupled to an ocean / sea ice model⁴⁵. Inclusion of these
17 couplings in the CCMs leads to a more complete representation of the climate system and feedbacks,
18 which could be particularly important for simulations of stratospheric polar ozone and its impact on
19 tropospheric climate.

20

21 **Acknowledgements**

22 We acknowledge the Chemistry-Climate Model Validation (CCMVal) Activity of the World Climate
23 Research Programme's (WCRP) Stratospheric Processes and their Role in Climate (SPARC) project
24 for organizing and coordinating the model data analysis, and the British Atmospheric Data Centre
25 (BADC) for collecting and archiving the CCMVal model output. We thank Anne Douglass for a
26 careful review of this chapter and Irene Cionni and Luke Oman for preparing some of the figures. This
27 research was supported by the US National Science Foundation and by the German Aerospace Center
28 (DLR).

29

2 9.6 References

3

- 41 Montzka, S. A., J. H. Butler, B.D. Hall, D. J. Mondeel, and J. W. Elkins, A decline in tropospheric
5 bromine, *Geophys. Res. Lett.*, *30*, 1826, doi:10.1029/2003GL017745, 2003.
- 62 World Meteorological Organization (WMO)/United Nations Environment Programme (UNEP),
7 Scientific Assessment of Ozone Depletion: 2006, World Meteorological Organization, Global Ozone
8 Research and Monitoring Project, Report No. 50, Geneva, Switzerland, 2007.
- 93 Intergovernmental Panel on Climate Change (IPCC) (2000), Special Report on Emissions Scenarios: A
10 Special Report of Working Group III of the Intergovernmental Panel on Climate Change, 599 pp.,
11 Cambridge Univ. Press, Cambridge, U. K.
- 12
- 134 Pawson, S., K. Kodera, K. Hamilton, T. G. Shepherd, S. R. Beagley, B. A. Boville, J. D. Farrara, T. D.
14 A. Fairlie, A. Kitoh, W. A. Lahoz, U. Langematz, E. Manzini, D. H. Rind, A. A. Scaife, K. Shibata, P.
15 Simon, R. Swinbank, L. Takacs, R. J. Wilson, J. A. Al-Saadi, M. Amodei, M. Chiba, L. Coy, J. de
16 Grandpré, R. S. Eckman, M. Fiorino, W. L. Grose, H. Koide, J.N. Koshyk, D. Li, J. Lerner, J. D.
17 Mahlman, N. A. McFarlane, C. R. Mechoso, A. Molod, A. O'Neill, R. B. Pierce, W. J. Randel, R. B.
18 Rood, and F. Wu, The GCM-Reality Intercomparison Project for SPARC: Scientific Issues and Initial
19 Results, *Bull. Am. Meteorol. Soc.*, *81*, 781-796, 2000.
- 20
- 215 Eyring V., N.R.P. Harris, M. Rex, T.G. Shepherd, D.W. Fahey, G.T. Amanatidis, J. Austin, M.P.
22 Chipperfield, M. Dameris, P.M. De F. Forster, A. Gettelman, H.F. Graf, T. Nagashima, P.A. Newman,
23 S. Pawson, M.J. Prather, J.A. Pyle, R.J. Salawitch, B.D. Santer, and D.W. Waugh, A strategy for
24 process-oriented validation of coupled chemistry-climate models. *Bull. Am. Meteorol. Soc.*, *86*, 1117–
25 1133, 2005a.
- 266 Austin, J., D. Shindell, S. R. Beagley, C. Brühl, M. Dameris, E. Manzini, T. Nagashima, P. Newman,
27 S. Pawson, G. Pitari, E. Rozanov, C. Schnadt, and T. G. Shepherd, Uncertainties and assessments of
28 chemistry-climate models of the stratosphere, *Atmos. Chem. Phys.*, *3*, 1-27. 2003.
- 297 Austin, J., J. Scinocca, D. Plummer, L. Oman, D. Waugh, H. Akiyoshi, S. Bekki, P. Braesicke, N.
30 Butchart, M. P. Chipperfield, D. Cugnet, M. Dameris, S. Dhomse, V. Eyring, S. Frith, R. Garcia, H.
31 Garny, A. Gettelman, S.C. Hardiman, D. Kinnison, J. F. Lamarque, E. Mancini, M. Marchand, M.
32 Michou, O. Morgenstern, T. Nakamura, S. Pawson, G. Pitari, J. Pyle, E. Rozanov, T. G. Shepherd, K.
33 Shibata, H. Teyssedre, R.J. Wilson, and Y. Yamashita , The decline and recovery of total column ozone
34 using mult-model time series analysis, *J. Geophys. Res.*, doi:10.1029/2010JD013857, 2010.
- 35
- 368 Eyring, V., N. Butchart, D. W. Waugh, H. Akiyoshi, J. Austin, S. Bekki, G. E. Bodeker, B. A. Boville,
37 C. Brühl, M. P. Chipperfield, E. Cordero, M. Dameris, M. Deushi, V. E. Fioletov, S. M. Frith, R. R.
38 Garcia, A. Gettelman, M. A. Giorgetta, V. Grewe, L. Jourdain, D. E. Kinnison, E. Mancini, E. Manzini,
39 M. Marchand, D. R. Marsh, T. Nagashima, P. A. Newman, J. E. Nielsen, S. Pawson, G. Pitari, D. A.
40 Plummer, E. Rozanov, M. Schraner, T. G. Shepherd, K. Shibata, R. S. Stolarski, H. Struthers, W. Tian,
41 and M. Yoshiki, Assessment of temperature, trace species and ozone in chemistry-climate model
42 simulations of the recent past, *J. Geophys. Res.*, *111*, D22308, doi:10.1029/2006JD007327, 2006.
- 439 Eyring, V., D. W. Waugh, G. E. Bodeker, E. Cordero, H. Akiyoshi, J. Austin, S. R. Beagley, B.
44 Boville, P. Braesicke, C. Brühl, N. Butchart, M. P. Chipperfield, M. Dameris, R. Deckert, M. Deushi,

- 1 S. M. Frith, R. R. Garcia, A. Gettelman, M. Giorgetta, D. E. Kinnison, E. Mancini, E. Manzini, D. R.
2 Marsh, S. Matthes, T. Nagashima, P. A. Newman, J. E. Nielsen, S. Pawson, G. Pitari, D. A. Plummer,
3 E. Rozanov, M. Schraner, J. F. Scinocca, K. Semeniuk, T. G. Shepherd, K. Shibata, B. Steil, R.
4 Stolarski, W. Tian, and M. Yoshiki, Multimodel projections of stratospheric ozone in the 21st century,
5 *J. Geophys. Res.*, 112, D16303, doi:10.1029/2006JD008332, 2007.
- 610 Eyring, V., I. Cionni, J. F. Lamarque, H. Akiyoshi, G. E. Bodeker, A. J. Charlton-Perez, S. M. Frith,
7 A. Gettelman, D. E. Kinnison, T. Nakamura, L. D. Oman, S. Pawson, and Y. Yamashita, Sensitivity of
8 21st century stratospheric ozone to greenhouse gas scenarios, *Geophys. Res. Lett.*, 37, L16807,
9 doi:10.1029/2010GL044443, 2010b.
- 1011 SPARC CCMVal (2010), SPARC Report on the Evaluation of Chemistry-Climate Models, V. Eyring,
11 T. G. Shepherd, D. W. Waugh (Eds.), SPARC Report No. 5, WCRP-132, WMO/TD-No. 1526,
12 <http://www.atmosp.physics.utoronto.ca/SPARC>.
- 1312 Eyring, V., D. E. Kinnison, and T. G. Shepherd, Overview of planned coupled chemistry-climate
14 simulations to support upcoming ozone and climate assessments, *SPARC Newsletter No. 25*, 11–17,
15 2005b.
- 1613 Eyring, V., M. P. Chipperfield, M. A. Giorgetta, D. E. Kinnison, E. Manzini, K. Matthes, P. A.
17 Newman, S. Pawson, T. G. Shepherd, and D. W. Waugh, Overview of the New CCMVal Reference
18 and Sensitivity Simulations in Support of Upcoming Ozone and Climate Assessments and the Planned
19 SPARC CCMVal Report, *SPARC Newsletter No. 30*, p.20-26, 2008.
- 2014 World Meteorological Organization (WMO)/United Nations Environment Programme (UNEP),
21 Scientific Assessment of Ozone Depletion: 2010, World Meteorological Organization, Global Ozone
22 Research and Monitoring Project, Report No. 52, Geneva, Switzerland, 2011.
- 2315 Waugh, D. W., L. Oman, S. R. Kawa, R. S. Stolarski, S. Pawson, A. R. Douglass, P. A. Newman, and J.
24 E. Nielsen, Impacts of climate change on stratospheric ozone recovery, *Geophys. Res. Lett.*, 36,
25 L03805, doi:10.1029/2008GL036223, 2009.
- 2616 Eyring, V., I. Cionni, G. E. Bodeker, A. J. Charlton-Perez, D. E. Kinnison, J. F. Scinocca, D. W.
27 Waugh, H. Akiyoshi, S. Bekki, M. P. Chipperfield, M. Dameris, S. Dhomse, S. M. Frith, H. Garny, A.
28 Gettelman, A. Kubin, U. Langematz, E. Mancini, M. Marchand, T. Nakamura, L. D. Oman, S. Pawson,
29 G. Pitari, D. A. Plummer, E. Rozanov, T. G. Shepherd, K. Shibata, W. Tian, P. Braesicke, S. C.
30 Hardiman, J. F. Lamarque, O. Morgenstern, D. Smale, J. A. Pyle, and Y. Yamashita, Multi-model
31 assessment of stratospheric ozone return dates and ozone recovery in CCMVal-2 models, *Atmos.*
32 *Chem. Phys.*, 10, 9451-9472, doi:10.5194/acp-10-9451-2010, 2010a.
- 3317 Garcia, R. R., and W. J. Randel, Acceleration of the Brewer-Dobson Circulation due to Increases in
34 Greenhouse Gases, In Press *J. Atmos. Sci.* **65**, 2731-2739, 2008.
- 3518 Oman, L. D., D. A. Plummer, D. W. Waugh, J. Austin, J. F. Scinocca, A. R. Douglass, R. J. Salawitch,
36 T. Canty, H. Akiyoshi, S. Bekki, P. Braesicke, N. Butchart, M. P. Chipperfield, D. Cugnet, S. Dhomse,
37 V. Eyring, S. Frith, S.C. Hardiman, D.E. Kinnison, J.-F. Lamarque, E. Mancini, M. Marchand, M.
38 Michou, O. Morgenstern, T. Nakamura, J. E. Nielsen, D. Olivie, G. Pitari, J. Pyle, E. Rozanov, T. G.
39 Shepherd, K. Shibata, R. S. Stolarski, H. Teyssedre, W. Tian, Y. Yamashita, and J. R. Ziemke, Multi-
40 model assessment of the factors driving stratospheric ozone evolution over the 21st century, *J.*
41 *Geophys. Res.*, 115, D24306, doi:10.1029/2010JD014362, 2010.
- 4219 Waugh, D. W., and V. Eyring, Quantitative performance metrics for stratospheric-resolving chemistry-
43 climate models, *Atmos. Chem. Phys.*, 8, 5699-5713, 2008.

- 120 Gettelman, A., T. Birner, V. Eyring, H. Akiyoshi, S. Bekki, C. Brühl, M. Dameris, D. E. Kinnison, F.
 2 Lefevre, F. Lott, E. Mancini, G. Pitari, D. A. Plummer, E. Rozanov, K. Shibata, A. Stenke, H.
 3 Struthers, and W. Tian, The Tropical Tropopause Layer 1960–2100, *Atmos. Chem. Phys.*, 9, 1621-
 4 1637, 2009.
- 521 Austin, J., K. Tourpali, E. Rozanov, H. Akiyoshi, S. Bekki, G. Bodeker, C. Brühl, N. Butchart, M.
 6 Chipperfield, M. Deushi, V. I. Fomichev, M. A. Giorgetta, L. Gray, K. Kodera, F. Lott, E. Manzini, D.
 7 Marsh, K. Matthes, T. Nagashima, K. Shibata, R. S. Stolarski, H. Struthers, and W. Tian, Coupled
 8 chemistry climate model simulations of the solar cycle in ozone and temperature, *J. Geophys. Res.*,
 9 113, D11306, 2008.
- 1022 Daniel, J. S., S. Solomon, R. W. Portmann, R. R. Garcia, Stratospheric ozone destruction: The
 11 importance of bromine relative to chlorine. *J. Geophys. Res.*, 104, 23,871-23,880, 1999.
- 1223 Newman, P. A., J. S. Daniel, D. W. Waugh, and E. R. Nash, A new formulation of equivalent effective
 13 stratospheric chlorine (EESC), *Atmos. Chem. Phys.*, 7, 4537-4552, 2007.
- 1424 Butchart, N., I. Cionni, V. Eyring, T. G. Shepherd, D. W. Waugh, H. Akiyoshi, J. Austin, C. Bruhl, M.
 15 P. Chipperfield, E. Cordero, M. Dameris, R. Deckert, S. Dhomse, S. M. Frith, R. R. Garcia, A.
 16 Gettelman, M. A. Giorgetta, D. E. Kinnison, F. Li, E. Mancini, C. McLandress, S. Pawson, G. Pitari,
 17 D. A. Plummer, E. Rozanov, F. Sassi, J. F. Scinocca, K. Shibata, B. Steil, and W. Tian, Chemistry-
 18 climate model simulations of 21st century stratospheric climate and circulation changes, *J. Climate*, 23,
 19 5349-5374, doi: 10.1175/2010JCLI3404.1, 2010.
- 2025 Shepherd, T. G., and A. I. Jonsson, On the attribution of stratospheric ozone and temperature changes to
 21 changes in ozone-depleting substances and well-mixed greenhouse gases, *Atmos. Chem. Phys.*, 8, 1435-
 22 1444, 2008.
- 2326 Stolarski, R. S., A. R. Douglass, P. A. Newman, S. Pawson, and M. R. Schoeberl, Relative contribution
 24 of greenhouse gases and ozone-depleting substances to temperature trends in the stratosphere: a
 25 chemistry/climate model study, *J. Climate*, 23, 28-42, 2010.
- 2627 Butchart, N., A. A. Scaife, M. Bourqui, J. de Grandpré, S. H. E. Hare, J. Kettleborough, U. Langematz,
 27 E. Manzini, F. Sassi, K. Shibata, D. Shindell, and M. Sigmond, Simulations of anthropogenic change in
 28 the strength of the Brewer-Dobson circulation, *Clim. Dyn.*, doi:10.1007/s00382-006-0162-4, 2006.
- 2928 Butchart, N., and A. A. Scaife, Removal of chlorofluorocarbons by increased mass exchange between
 30 the stratosphere and the troposphere in a changing climate, *Nature*, 410, 799-802, 2001.
- 3129 Austin, J., J. Wilson, F. Li, and H. Vomel, Evolution of Water Vapor Concentrations and Stratospheric
 32 Age of Air in Coupled Chemistry-Climate Model Simulations, *J. Atmos. Sci.*, 64, 905-921, 2007.
- 3330 Oman, L., D. W. Waugh, S. Pawson, R. S. Stolarski, and P. A. Newman (2009a), On the influence of
 34 anthropogenic forcings on changes in the stratospheric mean age, *J. Geophys. Res.*, 114, D03105,
 35 doi:10.1029/2008JD010378, 2009.
- 3631 McLandress, C., and T. G. Shepherd, Simulated Anthropogenic Changes in the Brewer-Dobson
 37 Circulation, Including Its Extension to High Latitudes, *J. Clim.*, 22, doi 10.1175/2008JCLI2679.1, 2008.
- 3832 Engel, A., et al., Age of stratospheric air unchanged within uncertainties over the past 30 years, *Nature*
 39 *Geosciences*, 2, 28 – 31, 2009.
- 4033 Waugh, D. W., Atmospheric dynamics: The age of stratospheric air, *Nature Geosciences*, 2, 14 – 16,
 41 2009.
- 4234 Garcia, R. R., W. J. Randel, and D. E. Kinnison, On the determination of age of air trends from
 43 atmospheric trace species, *J. Atm. Sci.*, pp139-154, Vol68, doi: 10.1175/2010JAS3527.1, 2011.

- 135 Rosenfield, J.E., and A.R. Douglass, Doubled CO₂ effects on NO_y in a coupled 2-D model, *Geophys. Res. Lett.* 25, 4381-4384, 1998.
- 336 Oman, L., D.W. Waugh, S.R. Kawa, R. S. Stolarski, A.R. Douglass, and P.A. Newman, Mechanisms and feedbacks causing changes in upper stratospheric ozone in the 21st century, *J. Geophys. Res.*, 115, D05303, doi:10.1029/2009JD012397, 2010.
- 637 Oman, L., D. W. Waugh, S. Pawson, R. S. Stolarski, and J. E. Nielsen (2008), Understanding the changes of stratospheric water vapor in coupled chemistry-climate model simulations, *J. Atmos. Sci.*, 65, 3278– 3291, doi:10.1175/2008JAS2696.1, 2008.
- 938 Shepherd, T. G., Dynamics, Stratospheric Ozone, and Climate Change. *Atmos. Ocean*, 46, 117-138, 2008.
- 1139 Li, F., R.S. Stolarski, and P.A. Newman, Stratospheric ozone in the post-CFC era, *Atmos. Chem. Phys.*, 9, 2207-2213, 2009.
- 1340 Bodeker, G. E., H. Shiona, and H. Eskes, Indicators of Antarctic ozone depletion, *Atmos. Chem. Phys.*, 5, 2603-2615, 2005.
- 1541 Newman, P. A., E. R. Nash, S. R. Kawa, S. A. Montzka, and S. M. Schauffler, When will the Antarctic ozone hole recover?, *Geophys. Res. Lett.*, 33, L12814, doi:10.1029/2005GL025232, 2006.
- 1742 Shindell, D.T., D. Rind, P. Lonergan, Increased polar stratospheric ozone losses and delayed eventual recovery owing to, *Nature*, 392, 589-592, 1998.
- 1943 Austin, J., and F. Li, On the relationship between the strength of the Brewer-Dobson circulation and the age of stratospheric air, *Geophys. Res. Lett.*, 33, L17807, doi:10.1029/2006GL026867, 2006.
- 2144 Douglass, A. R., R. S. Stolarski, M. R. Schoeberl, C. H. Jackman, M. L. Gupta, P. A. Newman, J. E. Nielsen, and E. L. Fleming, Relationship of loss, mean age of air and the distribution of CFCs to stratospheric circulation and implications for atmospheric lifetimes, *J. Geophys. Res.*, 113, D14309, doi:10.1029/2007JD009575, 2008.
- 2545 McLandress, C., A. I. Jonsson, D. A. Plummer, M. C. Reader, J. F. Scinocca, and T. G. Shepherd, Separating the dynamical effects of climate change and ozone depletion: Part 1. Southern Hemisphere Stratosphere. *J. Climate*, 23, 5002–5020, doi: 10.1175/2010JCLI3586.1, 2010.
- 2846 Austin, J., and R.J. Wilson, Sensitivity of polar ozone to sea surface temperatures and chemistry, *J. Geophys. Res.*, 115, D18303, doi:10.1029/2009JD013292, 2010.
- 3047 Lamarque J.-F., D. E. Kinnison, P. G. Hess, F. M. Vitt (2008), Simulated lower stratospheric trends between 1970 and 2005: Identifying the role of climate and composition changes, *J. Geophys. Res.*, 113, D12301, doi:10.1029/2007JD009277, 2008.
- 3348 Akiyoshi, H., L. B. Zhou, Y. Yamashita, K. Sakamoto, M. Yoshiki, T. Nagashima, M. Takahashi, J. Kurokawa, M. Takigawa, and T. Imamura, A CCM simulation of the breakup of the Antarctic polar vortex in the years 1980-2004 under the CCMVal scenarios, *J. Geophys. Res.*, 114, D03103, doi:10.1029/2007JD009261, 2009.
- 3749 Scinocca, J. F., N. A. McFarlane, M. Lazare, J. Li and D. Plummer, Technical Note: The CCCma third generation AGCM and its extension into the middle atmosphere, *Atmos. Chem. Phys.*, 8, 7055-7074, 2008.
- 4050 deGrandpre, J., S. R. Beagley, V. I. Fomichev, E. Griffioen, J. C. McConnell, A. S. Medvedev and T. G. Shepherd, Ozone climatology using interactive chemistry: Results from the Canadian Middle Atmosphere Model, *J. Geophys. Res.*, 105, 26475-26491, 2000.

- 151 Déqué, M., Frequency of precipitation and temperature extremes over France in an anthropogenic
2 scenario: model results and statistical correction according to observed values. *Global and Planetary*
3 *Change*, 57, 16-26, 2007.
- 452 Teysse re H., M. Michou, H. L. Clark, B. Josse, F. Karcher, D. Olivie, V.-H. Peuch, D. Saint-Martin,
5 D. Cariolle, J.-L. Atti , P. N d lec, P. Ricaud, V. Thouret, R. J. van der A, A. Volz-Thomas, and F.
6 Cheroux, A new tropospheric and stratospheric Chemistry and Transport Model MOCAGE-Climat for
7 multi-year studies: evaluation of the present-day climatology and sensitivity to surface processes,
8 *Atmos. Chem. Phys.*, 7, 5815-5860, 2007.
- 953 Stenke, A., M. Dameris, V. Grewe, and H. Garny, Implications of Lagrangian transport for simulations
10 with a coupled chemistry-climate model, *Atmos. Chem. Phys.*, 9, 5489-5504, 2009.
- 1154 Garny, H., M. Dameris, and A. Stenke, Impact of prescribed SSTs on climatologies and long-term
12 trends in CCM simulations, *Atmos. Chem. Phys.*, 9, 6017-6031, 2009.
- 1355 J ckel, P., Tost, H., Pozzer, A., Br hl, C., Buchholz, J., Ganzeveld, L., Hoor, P., Kerkweg, A.,
14 Lawrence, M. G., Sander, R., Steil, B., Stiller, G., Tanarhte, M., Taraborrelli, D., van Aardenne, J., and
15 Lelieveld, J.: The atmospheric chemistry general circulation model ECHAM5/MESSy1: consistent
16 simulation of ozone from the surface to the mesosphere, *Atmos. Chem. Phys.*, 6, 5067– 5104, 2006.
- 1756 Pawson, S., R. S. Stolarski, A. R. Douglass, P. A. Newman, J. E. Nielsen, S. M. Frith, and M. L. Gupta,
18 Goddard Earth Observing System chemistry-climate model simulations of stratospheric ozone-
19 temperature coupling between 1950 and 2005, *J. Geophys. Res.*, 113, D12103,
20 doi:10.1029/2007JD009511, 2008.
- 2157 Jourdain, L., S. Bekki, F. Lott, and F. Lef vre, The coupled chemistry-climate model LMDz-
22 REPROBUS: description and evaluation of a transient simulation of the period 1980–1999, *Annales*
23 *Geophysicae*, 26, 6, 1391-1413, 2008.
- 2458 Shibata, K. and M. Deushi, Long-term variations and trends in the simulation of the middle atmosphere
25 1980-2004 by the chemistry-climate model of the Meteorological Research Institute, *Annales*
26 *Geophysicae*, 26, 1299-1326, 2008a.
- 2759 Shibata, K. and M. Deushi, Simulation of the stratospheric circulation and ozone during the recent past
28 (1980-2004) with the MRI chemistry-climate model, CGER's Supercomputer Monograph Report
29 Vol.13, National Institute for Environmental Studies, Japan, 154 pp, 2008b.
- 3060 Schraner, M., E. Rozanov, C. Schnadt-Poberaj, P. Kenzelmann, A. Fischer, V. Zubov, B. P. Luo, C.
31 Hoyle, T. Egorova, S. Fueglistaler, S. Br nnimann, W. Schmutz and T. Peter, Technical Note:
32 Chemistry-climate model SOCOL: version 2.0 with improved transport and chemistry/ microphysics
33 schemes, *Atmos. Chem. Phys.*, 8, 5957-5974, doi:10.5194/acp-8-5957-2008, 2008.
- 3461 Egorova, T., E. Rozanov, V. Zubov, E. Manzini, W. Schmutz, and T. Peter, Chemistry-climate model
35 SOCOL: a validation of the present-day climatology, *Atmos. Chem. Phys.*, 5, 1557-1576, 2005.
- 3662 Pitari G., E. Mancini, V. Rizi and D. T. Shindell: Impact of Future Climate and Emission Changes on
37 Stratospheric Aerosols and Ozone, *J. Atmos. Sci.*, 59, 2002.
- 3863 Austin, J., and N. Butchart, Coupled chemistry-climate model simulations of the period 1980-2020:
39 Ozone depletion and the start of ozone recovery, *Q. J. R. Meteorol. Soc.*, 129, 3225-3249, 2003.
- 4064 Tian, W, and M. P. Chipperfield, A new coupled chemistry-climate model for the stratosphere: the
41 importance of coupling for future O₃-climate predictions, *Quart J. Roy. Meteor. Soc.*, 131, pp281-303,
42 2005.

165 Tian, W., M. P. Chipperfield, L. J. Gray, and J. M. Zawodny, Quasi-biennial oscillation and tracer
2 distributions in a coupled chemistry-climate model, *J. Geophys. Res.*, 111, D20301,
3 doi:10.1029/2005JD006871, 2006.

466 Morgenstern, O., P. Braesicke, M. M. Hurwitz, F. M. O'Connor, A. C. Bushell, C. E. Johnson, and J. A.
5 Pyle, The World Avoided by the Montreal Protocol, *Geophys. Res. Lett.*, 35, L16811,
6 doi:10.1029/2008GL034590, 2008.

767 Morgenstern, O., P. Braesicke, F. M. O'Connor, A. C. Bushell, C. E. Johnson, S. M. Osprey, and J. A.
8 Pyle, Evaluation of the new UKCA climate-composition model. Part 1: The stratosphere. *Geosci.*
9 *Model Dev.*, 1, 43-57, 2009.

1068 Garcia R. R., D. R. Marsh, D. E. Kinnison, B. A. Boville, and F. Sassi, Simulation of secular trends in
11 the middle atmosphere, 1950–2003, *J. Geophys. Res.*, 112, D09301, doi:10.1029/2006JD007485, 2007.

12

13

14

15

16

17

18

19

1 **Table 9-1.** CCMs that are used for ozone projections in the CCMVal-2 intercomparison of SPARC
 2 CCMVal [2010]: name of the model, group and references for model documentations.

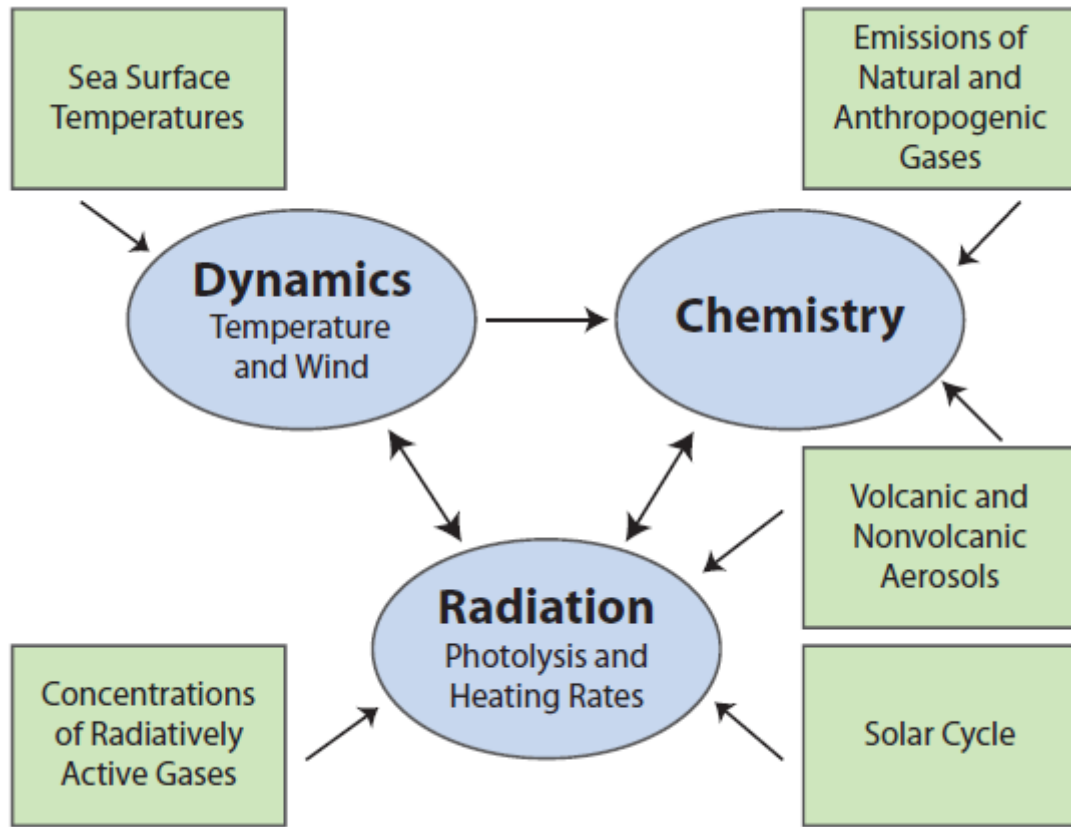
3

	CCM	Group and Location	References
1	AMTRAC3	GFDL, USA	<i>Austin and Wilson</i> [2010] ⁴⁶
2	CAM3.5	NCAR, USA	<i>Lamarque et al.</i> [2008] ⁴⁷
3	CCSRNIES	NIES, Tokyo, Japan	<i>Akiyoshi et al.</i> [2009] ⁴⁸
4	CMAM	MSC, University of Toronto, York Univ., Canada	<i>Scinocca et al.</i> [2008] ⁴⁹ ; <i>deGrandpre et al.</i> [2000] ⁵⁰
5	CNRM-ACM	Meteo-France; France	<i>Déqué</i> [2007] ⁵¹ ; <i>Teyssède et al.</i> [2007] ⁵²
6	E39CA	DLR, Germany	<i>Stenke et al.</i> [2009] ⁵³ ; <i>Garny et al.</i> [2008] ⁵⁴
7	EMAC	MPI Mainz, Germany	<i>Jöckel et al.</i> [2006] ⁵⁵
8	GEOSCCM	NASA/GSFC, USA	<i>Pawson et al.</i> [2008] ⁵⁶
9	LMDZrepro	IPSL, France	<i>Jourdain et al.</i> [2008] ⁵⁷
10	MRI	MRI, Japan	<i>Shibata and Deushi</i> [2008a,b] ^{58,59}
11	NIWA-SOCOL	NIWA, NZ	<i>Schraner et al.</i> [2008] ⁶⁰ ; <i>Egorova et al.</i> [2005] ⁶¹
12	SOCOL	PMOD/WRC and ETHZ, Switzerland	<i>Schraner et al.</i> [2008] ⁶⁰ ; <i>Egorova et al.</i> [2005] ⁶¹
13	ULAQ	University of L'Aquila, Italy	<i>Pitari et al.</i> [2002] ⁶² ; <i>Eyring et al.</i> [2006; 2007] ^{8,9}
14	UMETRAC	NIWA, NZ	<i>Austin and Butchart</i> [2003] ⁶³
15	UMSLIMCAT	University of Leeds, UK	<i>Tian and Chipperfield</i> [2005] ⁶⁴ ; <i>Tian et al.</i> , [2006] ⁶⁵
16	UMUKCA-METO	MetOffice, UK	<i>Morgenstern et al.</i> [2008, 2009] ^{66,67}
17	UMUKCA-UCAM	University of Cambridge, UK	<i>Morgenstern et al.</i> [2008, 2009] ^{66,67}
18	WACCM	NCAR, USA	<i>Garcia et al.</i> [2007] ⁶⁸

4
 5
 6

1 FIGURES

2
3
4



5
6
7
8
9
10
11
12
13
14

Figure 9-1. Schematic of a Chemistry-Climate Model (CCM). The core of a CCM (oval symbols) consists of an general circulation model (GCM) that includes calculation of the heating and cooling rates and a detailed chemistry module. They are interactively coupled. Photolysis rates are calculated online or are determined from a lookup table. Arrows indicate the direction of effect. Rectangular boxes denote external impacts. From Figure 5.1 of *WMO* [2007].²

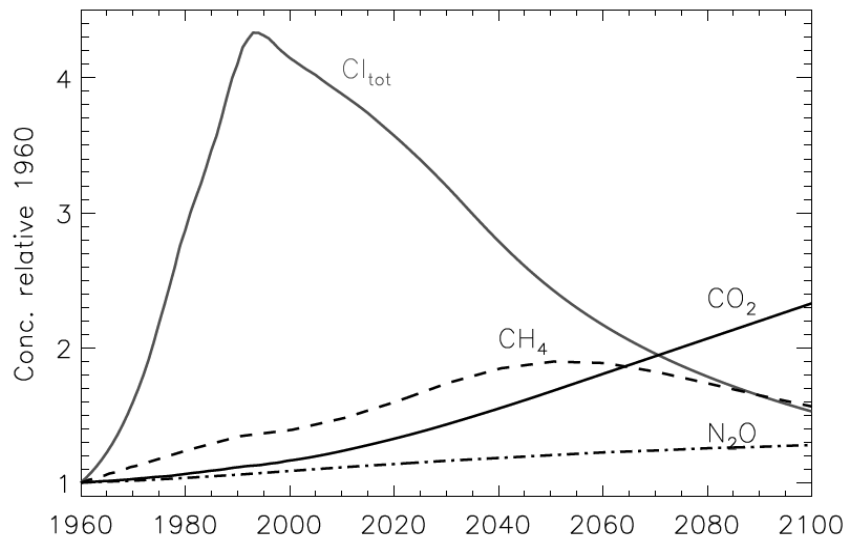
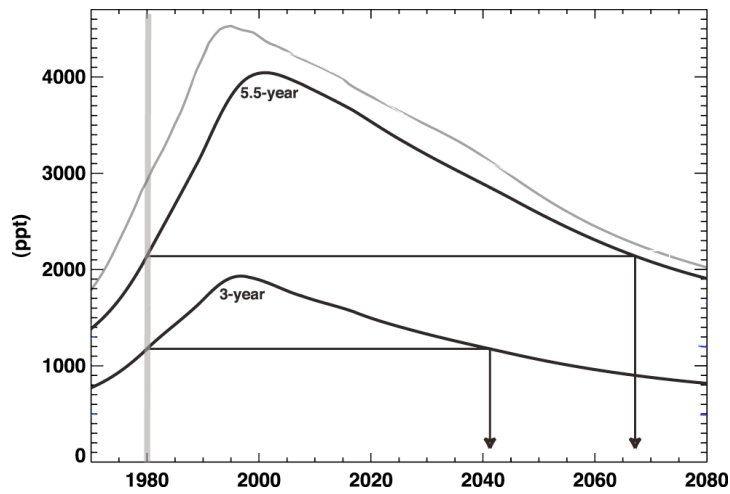


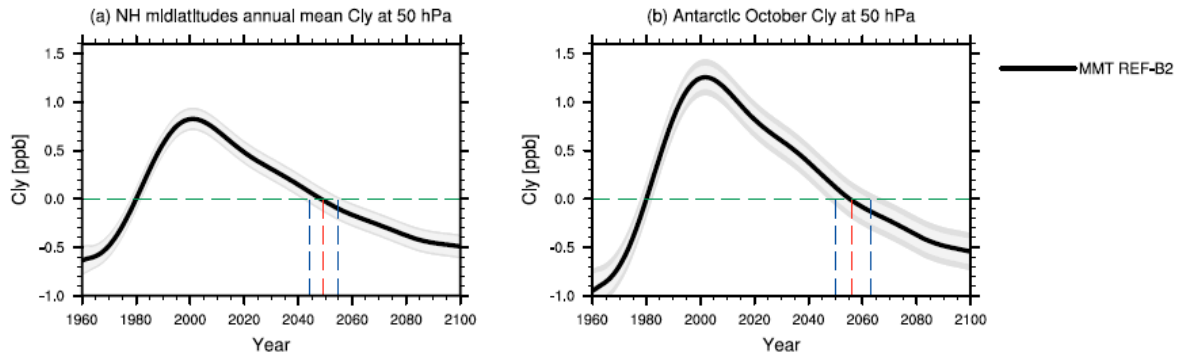
Figure 9-2. Time series of the surface concentrations of total chlorine from the WMO (2007) scenario, and GHGs from the IPCC SRES A1B scenario.^{2,3} Concentrations are shown relative to their 1960 concentrations (820 ppt for Cl_{tot}, 1265 ppb for CH₄, 316 ppm for CO₂, and 291 ppb for N₂O).

1
2
3
4
5
6
7
8



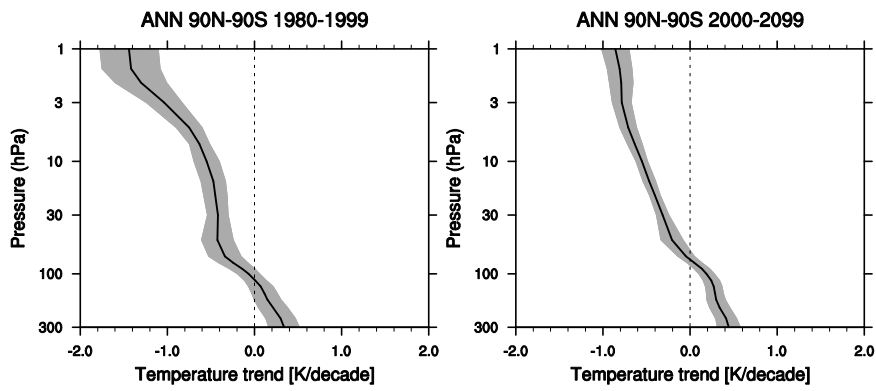
1
2
3
4
5
6
7
8
9
10

Figure 9-3. Evolution of surface $Cl_{tot}+60Br_{tot}$ (gray curve) and EESC for mean age-of-air values of 3 and 5.5 years (black curves) for WMO [2002] ODS scenarios. The gray vertical line indicates the reference year of 1980. The black horizontal and vertical lines indicate the recovery date of EESC to 1980 values. From Figure 5 of *Newman et al.* [2007].²³



1
 2 **Figure 9-4.** 1980 baseline-adjusted multi-model trend estimates of annually averaged inorganic
 3 chlorine (Cl_y) at 50 hPa (ppb) for **(a)** annual northern midlatitude mean 35–60°N and **(b)** Antarctica
 4 (60°S–90°S) in October. The red vertical dashed line indicates the year when the multi-model trend in
 5 Cl_y returns to 1980 values and the blue vertical dashed lines indicate the uncertainty in these return
 6 dates. Multi-model mean derived from Figures 3.6 and 3.11 of *WMO* [2011].¹⁴

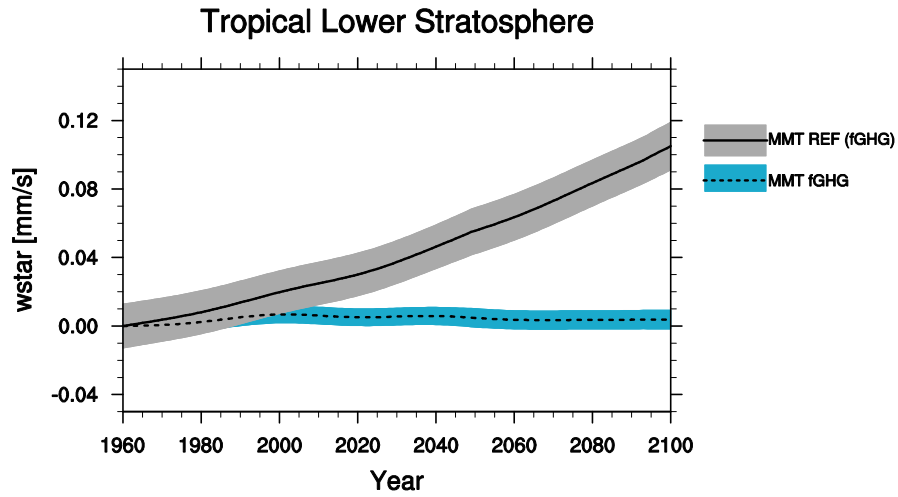
7
 8
 9



1
 2 **Figure 9-5:** Multi-model annual mean 90°S-90°N temperature trend from 1980 to 1999 (left panel),
 3 and from 2000 to 2099 (right panel). The black line shows the CCMVal-2 multi-model mean and the
 4 shaded region shows ± 1 standard deviation about the mean. Multi-model mean derived from Figure 4.4
 5 of *SPARC CCMVal* (2010).¹¹

6
 7
 8

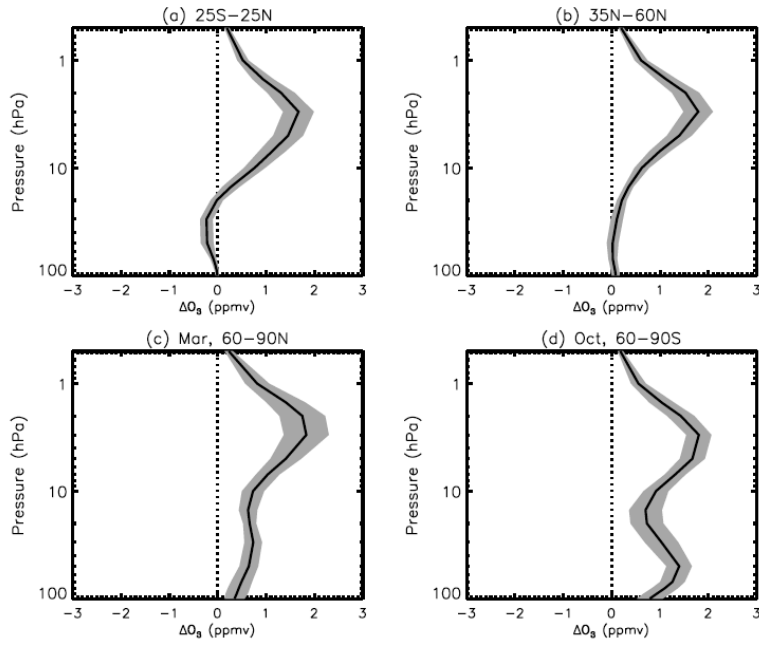
1



2
3
4
5
6
7
8
9
10

Figure 9-6. Multi-model mean and 95% confidence interval of the 1960 baseline-adjusted annual mean tropical upwelling mass flux between 20°S and 20°N at 70 hPa from the CCMVal-2 reference simulations (MMT REF, solid black line and grey shaded area) and the fixed greenhouse gas simulations (MMT fGHG, black dashed line and blue shaded area). From Figure 5 of *Eyring et al.* [2010].¹⁶

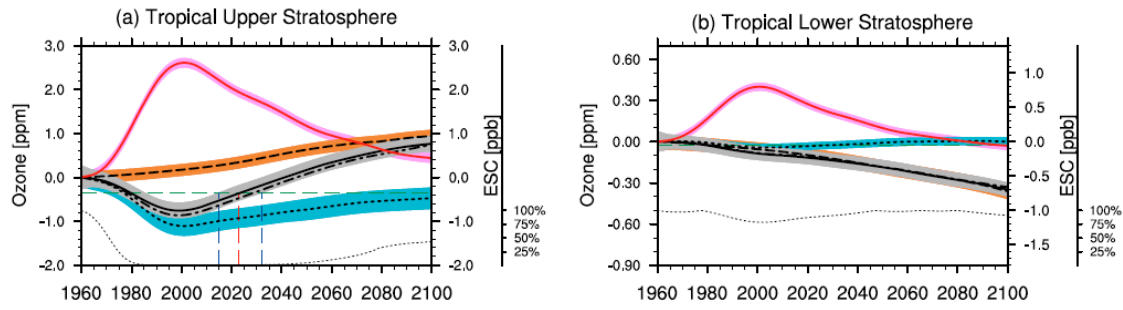
1



2
3
4
5
6
7
8
9

Figure 9.7. Multi-model mean of 2000-2100 ozone changes for different regions. The black line shows the CCMVal-2 multi-model mean and the shaded region shows ± 1 standard deviation about the mean. Based on analysis in *Oman et al. (2010)*.¹⁸

1
2



3
4



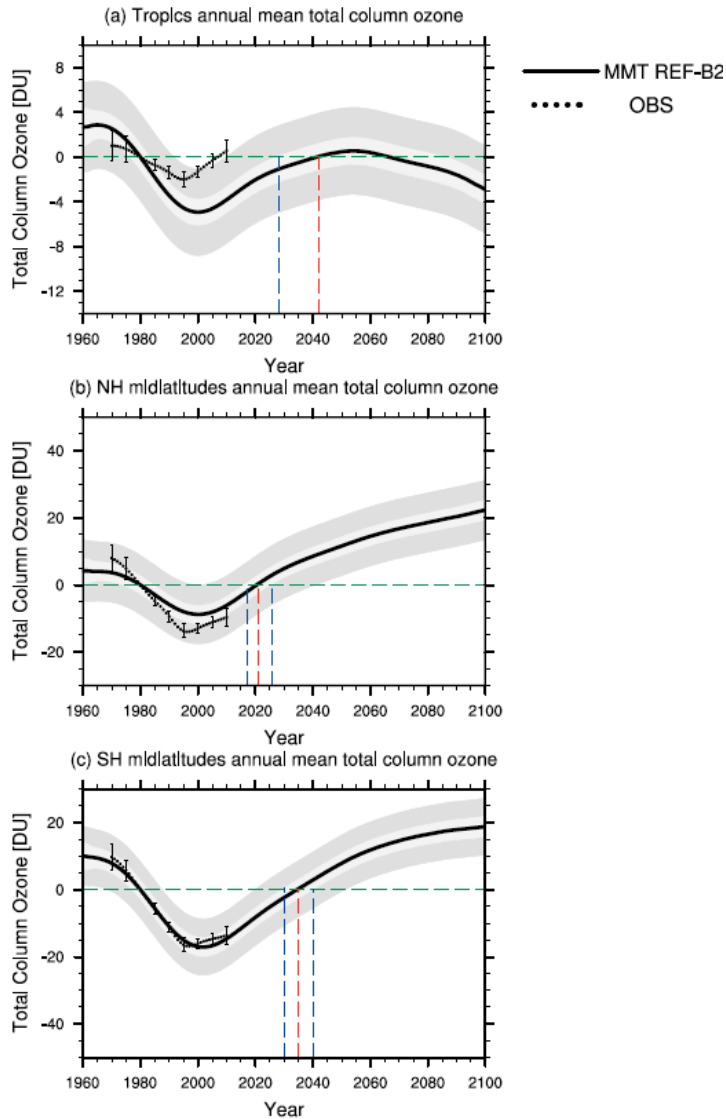
5

6 **Figure 9.8.** Tropical (25°S-25°N) annual mean 1960 baseline-adjusted ozone projections and 95%
7 confidence for the (a) upper and (b) lower stratosphere. The multi-model trend (MMT) is shown for the
8 CCMVal-2 reference run (REF-B2; black curves and grey shaded area), fixed ODS runs (fODS, black
9 dotted line and orange shaded area), and fixed GHG runs (fGHG, black dashed line and blue shaded
10 area). Also shown is the multi-model trend plus 95% confidence interval for Equivalent Stratospheric
11 Chlorine (ESC), displayed with the red solid line and light red shaded area. See Figure 2 of *Eyring et*
12 *al.* [2010a] for more details.¹⁶

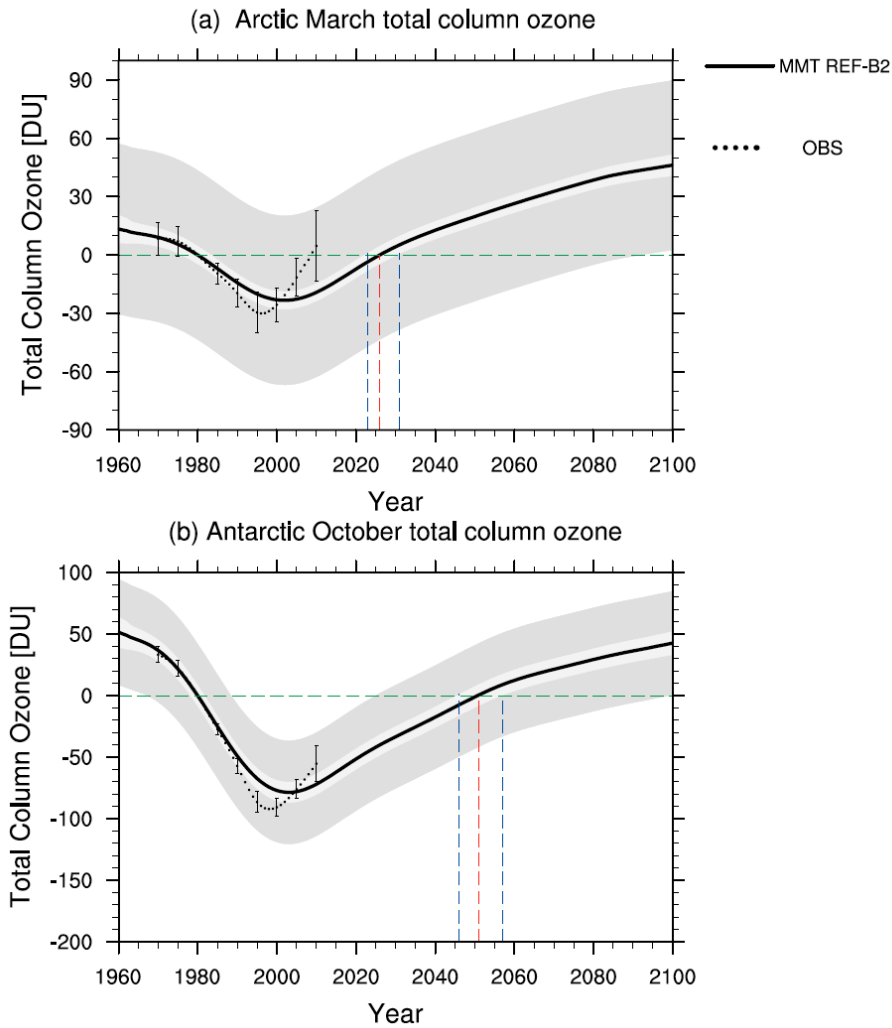
13

14

15



1
 2 **Figure 9.9.** 1980 baseline-adjusted multi-model trend estimates of annually averaged total column
 3 ozone (DU) for the tropics (25°S–25°N, upper panel) and midlatitudes (middle panel: 35°N–60°N,
 4 lower panel: 35°S–60°S) (thick dark gray line) with 95% confidence and 95% prediction intervals
 5 appearing as light- and dark-gray shaded regions, respectively, about the trend (note the different
 6 vertical scale among the panels). The red vertical dashed line indicates the year when the multi-model
 7 trend in total column ozone returns to 1980 values and the blue vertical dashed lines indicate the
 8 uncertainty in these return dates. The black dotted lines show observed total column ozone, where a
 9 linear least squares regression model was used to remove the effects of the quasi-biennial oscillation,
 10 solar cycle, El Niño-Southern Oscillation, and volcanoes from four observational data sets. Multi-
 11 model mean derived from Figure 3.6 of *WMO* [2011].¹⁴
 12
 13



2
3
4
5
6
7
8
9

Figure 9.10. As in Figure 9.9, but for the latitude range 60°N – 90°N in March (upper row) and the latitude range 60°S – 90°S in October (lower row). The red vertical dashed line indicates the year when CCMVal-2 multi-model trend in total column ozone (DU) returns to 1980 values and the blue vertical dashed lines indicate the uncertainty in these return dates. Note the different vertical scale among the panels. Multi-model mean derived from Figure 3.10 of *WMO* [2011].¹⁴